



# Nextiva Product Catalogue

Video Solutions for Networked CCTV

---

June 2006

---



# Verint Company Profile

Verint® Systems is a leading provider of analytic software-based solutions for security and business intelligence. Verint Networked Video Solutions enable government and commercial organisations to enhance the security of their facilities and protect people, property and assets. By networking video across multiple locations and applying advanced content analytics to extract actionable intelligence from live and stored video, Verint Networked Video Solutions are designed to deter terrorism and crime, increase operational efficiency, and improve organisational efficiency.

Verint's full suite of digital video solutions addresses the needs of virtually every public facility, transportation, and commercial organisation. And for securing outdoor areas, Verint offers video-over-IP solutions designed to be highly durable, reliable and secure with the same breadth of functionality as our solutions for wired CCTV. Verint solutions:

- Enable the migration from analogue CCTV systems to networked solutions while protecting your investment in analogue cameras and monitors
- Extend an existing video network easily and securely by using wireless video transmission
- Equip trains, buses and tramways with a dedicated onboard CCTV solution
- Manage and monitor the smallest to the largest numbers of cameras across single or multiple sites remotely with user-friendly video management software
- Extract critical security information and trigger alarms using powerful video analytics software, such as motion detection, object detection, etc.

More than 1000 organisations in over 50 countries deploy Verint's actionable intelligence solutions as an integral part of their security and business intelligence initiatives.

CONTENTS	PAGE
<b>1. Nextiva Intelligent Edge Devices</b>	
IP Devices .....	2-3
Wireless Solutions .....	4-5
<b>2. Industry Solutions</b>	
Nextiva Transit.....	6
<b>3. Nextiva Video Management Software</b>	
Nextiva.....	10
Mobile Video Management.....	11
Analytics.....	12

# Nextiva Intelligent Edges Devices

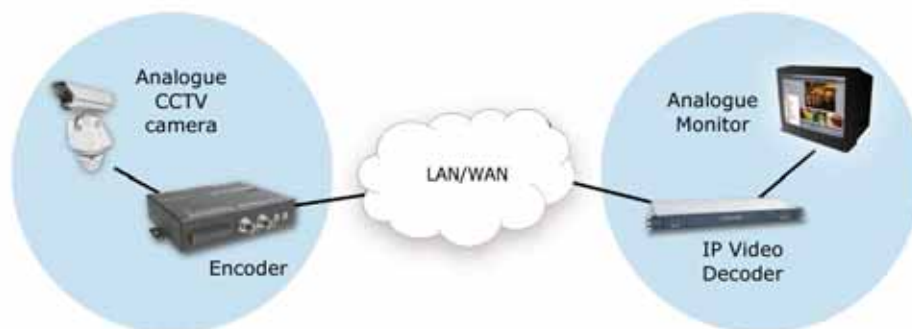
Verint provides a range of IP based intelligent edge devices to:

- Easily migrate from analogue CCTV to IP technology
- Extend an existing video network
- Enable the analysis of video at the point of capture

## Overview on IP Migration

Verint provides a range of single and multi-port Ethernet encoders and decoders to capture, digitise and compress video signals from analogue video cameras and transmit these images live over an IP network to display the video back onto analogue monitors.

Verint Ethernet encoders and decoders are a cost effective solution to migrate analogue video to a networked CCTV solution, while protecting your existing investment in analogue cameras and monitors.



## Ethernet Encoders and Decoders

Verint encoders use MPEG-4 based compression to capture video. These live images can be transmitted effectively over IP networks and stored on standard, off the shelf servers running under the software management of Nextiva™.

The range of Nextiva Intelligent Edge devices provides:

- High quality MPEG-4-based video at 25 fps
- Images over 10/100Base-T network
- Support for PTZ alarms

## Single-Port Ethernet Encoders

PART NUMBER	DESCRIPTION
Nextiva S1950e-T	Ethernet video server (encoder) (12VDC) - Replaces the S1500e-T
Nextiva S1950e-T-XT	Ethernet video server (encoder) with extended temperature range (-30/+60°C) (12VDC) - Replaces the S1500e-T-XT
Nextiva S1970e-T	High-resolution single channel Ethernet video server (encoder) with 48VDC POE (Power over Ethernet) & 4CIF at 25 FPS - Replaces the S1700e-T
Nextiva S1970e-T-XT	High-resolution Ethernet video server (encoder) with extended temperature range (-30/+60°C) requires 12 VDC supply - Replaces the S1700e-T-12VDC-XT

## Analytics On-board

The Nextiva S1900e range offers high quality compact single input encoders

- On-board analytics to eliminate the need to send all video to centralised servers for analysis
- High-resolution, 4CIF video streaming at 25 fps dual-stream, MPEG4 video input

PART NUMBER	DESCRIPTION
S1900e-T-AS	Highly compact, DVD-quality Ethernet Video Server with 12VDC



S1900

## Multi-Port Ethernet Encoders

The Nextiva S1700e range of multi-port encoders is a cost-effective solution designed for video monitoring and surveillance applications in which a high concentration of cameras terminates within the same area.

PART NUMBER	DESCRIPTION
Nextiva S1704e-T-A S1704e-T-A-AS	High quality Ethernet encoder with 4 video inputs, 4 CIF at 25 fps for each input (12VDC). Power supply not included, audio only available on S1704e-T-A-AS
S1708e-T/ S1708e-T-A	DVD quality Ethernet video server encoder with 8 video inputs, 4CIF at 25 FPS for each input (12 VDC). Power supply not included. / available with audio input
S1712e-T/ S1712e-T-A	DVD quality Ethernet video encoder with 12 video inputs, (12 VDC). Power supply not included. / available with audio input

## IP Fixed Cameras

Verint Nextiva IP fixed cameras offer a number of key differentiators over standard analogue and IP cameras:

- Interlaced and progressive scan video support
  - This unique feature renders true undistorted 4CIF resolution on both analogue and digital monitors
  - Fully software adaptable; works with any CCTV environment



S2600e

The Nextiva S2600e IP Camera delivers:

- High resolution, 4CIF video streaming at 25 fps
- Superior video quality
- Adapts to low light conditions

PART NUMBER	DESCRIPTION
S2600e	Fixed IP Camera



## Wireless Video Solutions

Verint wireless video solutions combine the functionality of Verint wireline edge devices with integrated secure 802.11 based wireless transport.

The Verint wireless video solutions include point-to-point CCTV extension systems and point-to-multipoint systems with data bridges for direct connection to Ethernet networks and management by Verint video management software.

### Verint's wireless video solutions offer:

- **Easy and quick access to remote locations:** Extend your CCTV network to remote parking, warehouse, building, etc.
- **Cost effectiveness:** Digging holes is expensive and not easily authorised on public areas. Therefore a secure wireless connection is a more cost effective approach.
- **A large coverage ideal for campus, city surveillance:** Several Verint transmitters and bridges can be used to create multiple video links covering a large geographical area.

### Main features of Verint's wireless video solutions:

- Highly secure and encrypted wireless transmission
- Uses "license-free" wireless LAN 2.4 and 5.x bands
- High-quality MPEG4 based compression
- Ability to sell tactical extensions to existing CCTV systems

## Point-to-Point Wireless Systems



PART NUMBER	DESCRIPTION
S1100-CE-12VDC-24	Point-to-point wireless system, including transmitter/receiver for European 2.4 GHz frequency bands with integrated 8.5dBi antenna (12VDC input) includes pole mount brackets.
S1100-CE-12VDC-5x	Dual-band point-to-point wireless system, including transmitter/receiver for European 5.47 GHz frequency bands with integrated 13dBi antenna (12VDC input). Includes pole mount brackets.
S1100-CE-24VAC-24	Point-to-point wireless system, including transmitter/receiver for European 2.4 GHz, frequency bands with integrated 8.5dBi antenna (24VAC input) includes pole mount brackets.
S1100-CE-24VAC-5x	Dual-band point-to-point wireless system, including transmitter/receiver for European 5.47 GHz frequency bands with integrated 13dBi antenna (24VAC input). Includes pole mount brackets.

\*Please note: S1100w series units do not include power supplies unless specifically stated.

## Point-to-Multipoint Wireless Systems

### Multipoint wireless receivers, repeaters and bridges

With the Point-to-Multipoint system, up to 4 fixed cameras connected to S1100w devices can be received on a single wireless access point S3100.



PART NUMBER	DESCRIPTION
S1100w-CE-12VDC-24	S1100w multi-band multipoint transmitter for European 2.4 GHz frequency bands with integrated 8.5dBi antenna (12VDC input).
S1100w-CE-12VDC-5x	S1100w multi-band multipoint transmitter for European 5.x GHz frequency bands with integrated 13dBi antenna (12VDC input).
S1100w-CE-24VAC-24	S1100w multi-band multipoint transmitter for European 2.4 GHz frequency bands with 8.5dBi (24VAC input).
S1100w-CE-24VAC-5x	S1100w multi-band multipoint transmitter for European 5.x GHz frequency bands with 13dBi antenna (24VAC input).
S1100w-CE-MT-12VDC-24	S1100w multi-band multipoint transmitter with <b>embedded motion tracking</b> for European 2.4 GHz frequency bands and 8.5dBi, 2.4 GHz antenna (12VDC input).
S1100w-CE-MT-12VDC-5x	S1100w multi-band transmitter with <b>embedded motion tracking</b> for European 5.x GHz frequency bands with 13dBi antenna (12VDC input).
S1100w-CE-MT-24VAC-24	S1100w multi-band transmitter with <b>embedded motion tracking</b> for European 2.4 GHz, frequency bands and 8.5dBi antenna (24VAC input).
S1100w-CE-MT-24VAC-5x	S1100w multi-band transmitter with <b>embedded motion tracking</b> for European 5.x GHz frequency bands and 13dBi antenna (24VAC input)
S3100-CE-24	Outdoor multi-band 2.4 or 5.x GHz wireless Ethernet bridge for European 2.4 GHz, and 5.x GHz frequency bands (48VDC input) comes with power-over-Ethernet injector, 25-Metre outdoor Ethernet cable, wall-mount and pole-mount brackets and European power cable. The <b>S3100-24-CE defaults to the 2.4 GHz band upon system reset</b> (Antenna not included).
S3100-CE-5x	<b>The S3100-5x-CE defaults to the 5.x GHz band upon system reset</b> (Antenna not included).
S3100-CE-RP-24	Outdoor wireless <b>Ethernet repeater</b> with default setting for European 2.4 GHz frequency bands (24VAC input) with 1 Metre outdoor Ethernet cable, wall-mount and pole-mount brackets (Antennas not included).
S3100-CE-RP-5x	Outdoor 2.4 or 5.x GHz wireless <b>Ethernet repeater</b> with default setting for European 5.x GHz frequency bands (24VAC input) with 1 Metre outdoor Ethernet cable, wall-mount and pole-mount brackets (Antennas not included).

Point-to-multipoint wireless systems are certified for use in major European Countries. For a complete list of countries for which S1100w certification has been obtained, please contact your Verint representative. It is illegal to use these radio systems in countries for which certification has not been obtained.

\*Please note that S1100w and S3100 series units do not include power supplies unless specifically stated.

## Optional Accessories for Wireless systems

A range of patch antennas (from 8.5 to 24 dBi gain) are available for 2.4 and 5.47 frequency bands. Additional accessories, such as cables, transformers, outdoor junction box, are available as well. For further information, please contact your local Verint distributor.

# Industry Solutions

Verint provide a range of industry solutions including Nextiva Retail, Nextiva Critical Infrastructure and Nextiva Transit.

## Nextiva Transit - End-to-End Solution for Mass Transportation

Built on Verint expertise from thousands of successful transportation deployments worldwide, Nextiva Transit captures video, audio, and data from virtually any location in the transit system infrastructure. Then, Nextiva Transit applies your security policies to automatically identify threats, issue alarms and alerts, and initiate action.

Designed with a standards-based architecture for easy integration with your existing security infrastructure, Nextiva Transit enhances the effectiveness of your security initiatives and helps you proactively counter threats, improve emergency event response, and conduct more productive investigations.

Experience has shown that the demanding transportation environment requires solutions that have been specifically designed to meet its rugged environment. Nextiva Transit provides a series of solutions that deliver security onboard trains or buses, at a station or depot or across the entire infrastructure. In a control room, our software applications deliver images and alarms from a broad range of cameras, sites/stations, interfaces, etc. and provide a scalable solution for managing video within the transit sector. Nextiva Edge Devices capture video for ongoing transmission across IP or wireless networks and our range of onboard video solutions consists of high quality colour and black-and-white cameras, digital recorders and monitors for securing passengers, personnel and assets.



From car park to ticket-hall, from platform to carriage - Verint solutions protect people and property, reducing crime and fraud, and building passenger confidence.



# On-board Rail and Bus Solutions

Verint's range of ruggedised, high quality, reliable mobile video solutions include:

- Mobile digital video recorders providing on-board storage and management. The solution enables you to access records and images remotely over LAN and GPRS if required.
- High-resolution colour or black-and-white vandal resistant cameras with polycarbonate dome housings.
- High-resolution, rugged TFT monitors for on-board review of video and alarms. At low speeds, the monitors switch to a blank screen to avoid distracting the driver.

## Mobile Recorder Overview

RECORDER	BUS	RAIL	ALARM	LED	DISPLAY	WLAN	GSM	IBIS	GPS
<b>RP4000 Series</b>									
RP4000L	•	•	•	•					
RP4000S	•	•	•	•			•	•	•
RP4000E	•	•	•	•			•	•	•
<b>RP12000 Series</b>									
RP12101	•	•	•			•	•	•	•
RP12001LED	•	•	•	•		•	•	•	•
RP12001Display	•	•	•		•	•	•	•	•
RP12002	•	•	•			•	•	•	•
RP12002LED	•	•	•	•		•	•	•	•
RP12002Display	•	•	•		•	•	•	•	•
<b>mDVR Series</b>									
mDVR-6L	•		•	•	•	•	•	•	•
mDVR-6S	•		•	•	•	•	•	•	•
mDVR-12S	•	•	•	•	•	•	•	•	•
mDVR-12R		•	•	•	•	•	•	•	•



MDVR



RP4000



Train Video Monitor

## Mobile Recorder Product Overview



RP 12001

PRODUCT	PART NUMBER	DESCRIPTION
<b>RP4000 Series</b>		
RP4000L	RP78500010	Digital video recorder, 12-42VDC, 4 BNC video inputs, MJPEG Compression, 8 frames per second
RP4000S	RP78500020	Digital video recorder, 12-42VDC, 4 BNC video inputs, MJPEG Compression, 25 frames per second, IBIS, GSM and GPS interface
RP4000E	RP78500030	Digital video recorder, 12-42VDC, 4 BNC video inputs, MJPEG Compression, 25 frames per second, IBIS, GSM and GPS interface
<b>RP12000 Series</b>		
RP12101	RP78500040	Digital video recorder, 12-42VDC, 1 hard drive, MJPEG Compression, 12 video inputs, 25 frames per second
RP12001LED	RP78500050	Digital video recorder, 12-42VDC, 1 hard drive, 12 video inputs, MJPEG Compression, 25 frames per second, additional interface for LED box and Bi-Polar LED
RP12001Display	RP78500060	Digital video recorder, 12-42VDC, 1 hard drive, 12 video inputs, MJPEG Compression, 25 frames per second, additional interface for Display
RP12002	RP78500070	Digital video recorder, 12-42VDC, 2 hard drives, 12 video inputs, MJPEG Compression, 25 frames per second
RP12002LED	RP78500080	Digital video recorder, 12-42VDC, 2 hard drives, 12 video inputs, MJPEG Compression, 25 frames per second, additional interface for Event box and Bi-Polar LED
RP12002Display	RP78500090	Digital video recorder, 12-42VDC, 2 hard drives, 12 video inputs, MJPEG Compression, 25 frames per second, additional interface for Display
<b>mDVR Series</b>		
mDVR-6L	RP78600010	Digital video recorder, Nextiva ready, Hybrid recording function, 11-48VDC, MPEG-4 Compression, 6 video inputs, 1 video output, Audio input, removable CF-Card, 150 FPS/CIF
mDVR-6S	RP78600020	Digital video recorder, Nextiva ready, Hybrid recording function, 11-48VDC, MPEG-4 Compression, 12 video inputs, Audio input and output, 300 FPS/CIF
mDVR-12S	RP78600030	Digital video recorder, Nextiva ready, Hybrid recording function, 24 or 110VDC, MPEG-4 Compression, 12 video inputs, Audio input and output, removable CF-Card, 300 FPS/CIF
mDVR-12R	RP78600040	Digital video recorder, Nextiva ready, Hybrid recording function, 24 or 110VDC, MPEG-4 Compression, 12 video inputs, Audio input and output, removable CF-Card, 300 FPS/CIF



RP 105

## Mobile Camera Product Overview

PRODUCT	PART NUMBER	DESCRIPTION
RP 105	RP39100100	1/3" CCD Back eye mono chrome camera, 3.0 mm lens, 12 V DC, 380 TV lines, 0 lux @ 6 IR LED's, dimensions 70 x 44 x 57mm
RP 206	RP31000002	1/3" colour cube camera module (50x50mm) for the installation in passenger information systems or hidden applications. 1/3" Sony module, 2.9 mm lens, 12 V DC, 470 TV lines, 0.02 lux @ sensor / 0.4 lux @ F2.0
RP 306L	RP34200001	1/3" CCD vandal resistant colour mini dome camera, wall mount, 4.3 mm lens, 12 V DC, 460 TV lines, 0.02 lux @ sensor / 0.4 lux @ F2.0, dimensions Ø= 45 height= 44.5mm

PRODUCT	PART NUMBER	DESCRIPTION
RP 306L-IC	RP34200002	1/3" CCD vandal resistant colour mini dome camera, In ceiling mount, 4.3 mm lens, 12 V DC, 460 TV lines, 0.02 lux @ sensor / 0.4 lux @ F2.0, dimensions Ø= 45 height= 44.5mm
RP 406K	RP34200010	1/3" Sony Exview CCD day/night vandal resistant colour dome camera, wall mount, 2.9 mm lens, 12 V DC, 470 TV lines, 0.015 lux @ sensor / 0.3 lux @ F2.0, dimensions Ø= 79 height= 56.5mm
RP 406K-IC	RP34200011	1/3" Sony Exview CCD day/night vandal resistant colour dome camera, In ceiling , 2.9 mm lens, 12 V DC, 470 TV lines, 0.015 lux @ sensor / 0.3 lux @ F2.0, dimensions Ø= 79 height= 56.5mm.
RP 505K	RP34200050	1/3" CCD vandal resistant mono chrome dome camera, wall- / ceiling mount, 2.9 mm lens, 12 V DC, 570 TV lines, 0.0075 lux @ sensor / 0.15 lux @ F2.0, dimensions Ø= 109 height= 75mm
RP 506K	RP34200080	1/3" Sony Exview CCD day/night vandal resistant colour dome camera, wall- / ceiling mount, 2.1 mm lens, 12 V DC, 470 TV lines, 0.015 lux @ sensor / 0.3 lux @ F2.0, dimensions Ø= 109 height= 75mm
RP 506L	RP34200060	1/3" Sony CCD vandal resistant colour dome camera, wall- / ceiling mount, 2.1 mm lens, 12 V DC, 470 TV lines, 0.02 lux @ sensor / 0.4 lux @ F2.0, dimensions Ø= 109 height= 75mm.
RP706Left	RP35100710	Robust outdoor colour camera (left), IP65, housing and window with heater, passive cooling. 1/3" Sony module, lens included, 12 V DC, 470 TV lines, 0.02 lux @ sensor / 0.4 lux @ F2.0
RP706Right	RP35100720	Robust outdoor colour camera (right), IP65, housing and window with heater, passive cooling. 1/3" Sony module, lens included, 12 V DC, 470 TV lines, 0.02 lux @ sensor / 0.4 lux @ F2.0



## Mobile Monitor Product Overview

### Train Monitors

PRODUCT	PART NUMBER	DESCRIPTION
MT4084	RP61004084	8.4" colour TFT driver display, 800x600 pixel elements, 24 V DC, automatic brightness control, contrast ratio 500:1, brightness 350cd/m2
MT4104	RP61004104	10.4" colour TFT driver display, 800x600 pixel elements, 24 V DC, automatic brightness control, contrast ratio 500:1, brightness 400cd/m2

### Bus Monitors

PRODUCT	PART NUMBER	DESCRIPTION
MB2056	RP61000001	5.6" colour TFT driver display, 960x234 pixel elements, 12 V DC, contrast ratio 150:1, brightness 250cd/m2
MB2068	RP61000016	6.8" colour TFT driver display, 1152x234 pixel elements, 12 V DC, contrast ratio 150:1, brightness 300cd/m2
MB2084	RP61000022	8.4" colour TFT driver display, 800x600 pixel elements, 12 V DC, contrast ratio 250:1, brightness 300cd/m2

# Nextiva Video Management Software

## Nextiva

Nextiva is a powerful, enterprise-class video management platform and suite of applications designed to:

- Provide alarms, distribution of video, diagnostics and meet the requirements of specific markets
- Manage the storage and analysis of the video information using standard servers, network and storage devices
- Enable you to access video images from virtually anywhere on the network
- Allow centralised or remote management, scaling up to thousands of cameras
- Enable easy integration with existing IT infrastructure

### Nextiva Review Screenshots



## Standard Software Modules

PART NUMBER	DESCRIPTION
NEX-5-MS-S	Nextiva Master Server Software
NEX-5-ESM-ST	Enterprise Storage Manager Software - Site License
NEX-5-IS-ST	Nextiva IntelliStream™ automatically distributes live and recorded video to monitors, video walls, PDAs and computers across dispersed user locations in a bandwidth efficient manner
NEX-5-1RV-S NEX-5-RV-ST	Nextiva Review enables flexible live and recorded video viewing from a PC client or Web browser interface, with priority icons that makes alarms and associated video accessible with a single click One (1) Review/WebReview Client License Review/WebReview Site Licenses
NEX-5-CM-IM	Nextiva Investigation Management Site License Transforms case-related video and data captured from a variety of sources and locations into a searchable database than can be accessed, managed and shared by authorised personnel
NEX-5-1SDK-S	One (1) SDK Adapter License
NEX-5-MP-ST	Nextiva Map Support License
NEX-5-EM-S	Enterprise Monitoring Software - Client/Server License

## Camera and Camera Failover Licenses

Camera and camera failover licenses are charges per camera managed and attract a discount for large volume order.

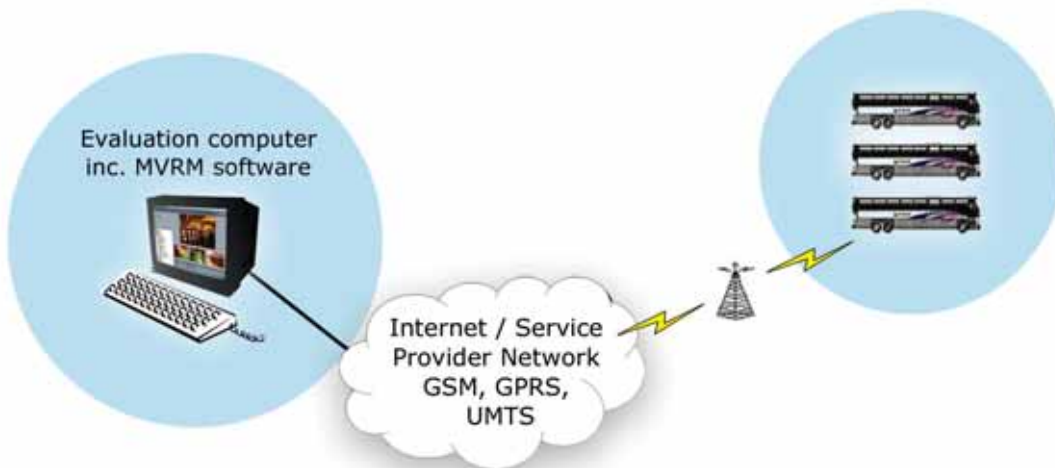
PART NUMBER	DESCRIPTION
NEX-5-1CAM-S	Standard Nextiva camera license per camera based on quantity in order
NEX-5-1FOC-S	Failover license per camera based on quantity of licenses in order

## Pre Configured Nextiva Systems

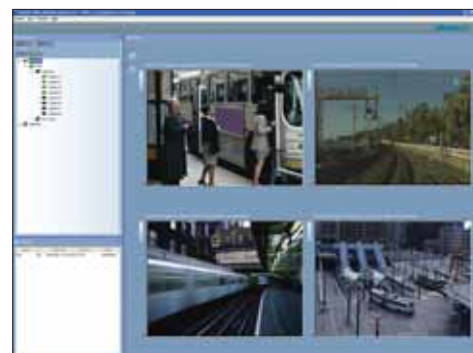
Verint's range of Nextiva pre configured servers offers pre-packaged combinations of Nextiva video management software and hardware. For further information on these pre-packaged bundles, please contact your local Verint distributor.

## Nextiva Mobile Video Remote Monitor (MVRM) Software

To provide remote management of mobile video solutions, the Nextiva MVRM software enables the evaluation of images and alarms from across a network of vehicles for ongoing fleet and security management. As wireless, or network-based vehicles come in and out of contact with the network nodes, logs and alarms with recorded images can be automatically downloaded to the control room.



The Nextiva MVRM software enables central management and review of up to 100 vehicles (100 recording devices). When connected, images from the vehicle's live cameras can be shown either as a full picture or as quad picture. MVRM also allows the control room to establish a connection manually or automatically when an alarm is activated on-board a vehicle. The MVRM solution works in conjunction with Verint RP4000 L/S/E RP8000 and RP12001/2 recorders and the Nextiva Mobile Video Management configuration software.



## Nextiva Mobile Video Management (MVM) Software

The Nextiva MVM software provides the remote configuration of individual or networked recording solutions on board trains or buses. The solution enables quick and easy updating of recording units on-board vehicles and configuration of cameras, alarms, etc.

# 3

## Video Analytics for Actionable Intelligence

Verint video analytics transform video into value by pinpointing significant events and transmitting this intelligence to the appropriate people, wherever they are located.

Nextiva Analytics analyse live video in real time to detect, identify, and track objects of interest:

- Indoor and outdoor advanced video motion detection
- Perimeter intrusion
- Behaviour patterns within video such as objects appearing, disappearing, loitering, left behind, etc
- Retail store analysis
- People/passenger counting



## MotionTrack™

### Advanced Motion Tracking Solutions

MotionTrack provides a dedicated in-line processor that analyses live video signals and communicates tracking and motion information to the video management software.

PART NUMBER	DESCRIPTION
951-3010	MotionTrack – One Input

## IntelliView

### Video Analysis Software

Nextiva IntelliView™ provides advanced object identification and monitoring to enable a more proactive approach to security and business optimisation.

PART NUMBER	DESCRIPTION
NEX-5-AN-E100/ E200/E1000	IntelliView Analytics Sensor License - E100/200/1000
NEX-5-AN-FA	IntelliView Forensic Analytics Site License
NEX-5-IVAP-SR	IntelliView Video Analytic Processor Server Hardware
NEX-5-IVM-SR	IntelliView Master Server Hardware

By providing this document, Verint Systems Inc. is not making any representations regarding the correctness or completeness of its contents and reserves the right to alter this document at any time without notice.

All marks referenced herein with the ® or TM symbol are registered trademarks or trademarks of Verint Systems Inc. or its subsidiaries. All rights reserved. All other marks are trademarks of their respective owners.

© 2006 Verint Systems Inc. All rights reserved





Call us at: +44 (0)1932 839 500  
Email: [marketing.emea@verint.com](mailto:marketing.emea@verint.com)  
Or on the web at: [www.verint.com](http://www.verint.com)  
Verint Systems Ltd,  
241 Brooklands Road, Weybridge,  
Surrey, KT13 0RH, UK